



**ISNI** International Society  
of Neuroimmunology

WE ARE NEUROIMMUNOLOGY

# ISNI 2025

5-8 October

Chiba, Greater Tokyo-Japan

17<sup>th</sup> INTERNATIONAL CONGRESS  
5<sup>th</sup> GLOBAL SCHOOL OF NEUROIMMUNOLOGY



## About ISNI | Mission

- To further the knowledge of neuroimmunologic mechanisms and to apply them to human disease
- To encourage the generation and interchange of ideas and scientific data of relevance to the human nervous system development and disease, between basic and clinical scientists engaged in research in the field
- To sponsor and conduct symposia for General Members and persons engaged in or interested in research in the field
- To provide a central information service to distribute material related to the field, and to publish printed matter related to neuroimmunology



# ■ About ISNI | International Advisory Board

## ■ PRESIDENT

**Roberto Furlan,**  
Milan, Italy

## ■ SECRETARY/TREASURER

**Lesley Probert,**  
Athens, Greece

## ■ VICE-PRESIDENT

**Heinz Wiendl,**  
Freiburg, Germany

## ■ PAST PRESIDENT

**Francisco Quintana,**  
Boston (MA), USA

## ■ INTERNATIONAL ADVISORY BOARD

**K. Akassoglou,** San Francisco (CA), USA

**F. Brilot,** Westmead, Australia

**S. Baranzini,** San Francisco (CA), USA

**A. Cross,** St. Louis (MO), USA

**J. Gommerman,** Toronto (ON), Canada

**N. Isobe,** Fukuoka City, Japan

**T. Korn,** Munich, Germany

**T. Kuhlmann,** Muenster, Germany

**R. Liblau,** Toulouse, France

**D. McGavern,** Bethesda (MD), USA

**V. Miron,** Toronto (ON), Canada

**S. Miyake,** Tokyo, Japan

**L. Piccio,** Sydney, Australia

**S. Pittock,** Rochester (MN), USA

**A. Prat,** Montreal (QC), Canada

**D. Schafer,** Worcester (MA), USA

**C. Stadelmann,** Göttingen, Germany

**T. Yamamura,** Tokyo, Japan

# ■ ISNI 2025 Chiba - Japan | Congress Venue

## ■ Makuhari Messe, Inc.

2-1, Nakase, Mihama-ku, Chiba-city, 261-8550 Japan

Congress Official Website: [www.isniweb.org/congress](http://www.isniweb.org/congress)



CONGRESS ORGANIZERS



**CHAIR**  
**Takashi Yamamura**  
Tokyo



**VICE CHAIRS**  
**Kazuo Fujihara**  
Fukushima



**VICE CHAIRS**  
**Satoshi Kuwabara**  
Chiba



**SECRETARY**  
**Noriko Isoe**  
Fukuoka



**FINANCE**  
**Yuko Shimizu**  
Tokyo

ORGANIZING COMMITTEE

**CHAIR**  
**Sachiko Miyake**  
Tokyo

**VICE CHAIRS**  
**Okamoto Tomoko**  
Tokyo

**ADVISORS:**

**INTERNATIONAL**  
IAB members of ISNI

- LOCAL**
- Jun-ichi Kira**  
Fukuoka
  - Akio Suzumura**  
Nagoya
  - Susumu Kusunoki**  
Tokyo
  - Takeshi Tabira**  
Tokyo
  - Takahiko Saida**  
Kyoto



## Invitation letter to ISNI 2025

We are very pleased that we will be hosting ISNI 2025 in Japan next October. After COVID-19, our daily life as well as academic activities changed drastically: to prevent spreading of infection, virtual meetings have tended to be preferred so we lost many opportunities for building connections and scientific discourse through social interactions with wine and feasting. However, the trend has now clearly changed.

In Japan, we are now seeing many more tourists than before COVID-19, and station platforms of the Shinkansen bullet train are crowded with foreign tourists. This seems to be like a rebound phenomenon after withdrawal of immunosuppressive treatments!

Historically, Japan was first “discovered” by the West in 1543, with the Portuguese bringing new technology to Japan, such as matchlock guns which greatly changed the form of war and fighting strategies. Now I feel that Japan is being rediscovered by tourists with great enthusiasm and joy.

I am not working for a travel agency, but as if I am, I like to send you a message “We very much look forward to seeing you in ISNI 2025, Chiba”

Please visit Japan to attend the world-neuroimmunology event, and bring together new knowledge, ideas and academic weapons.

**Prof. Takashi Yamamura**

Congress Chair

*Director, Department of Immunology,*

*National Institute of Neuroscience,*

*NCNP Ogawahigashi, Kodaira, Tokyo, Japan*



# ■ ISNI 2025 Chiba - Japan | Preliminary Topics

## ■ ISNI NAMED LECTURES

Newsom Davis Lecture  
The Rita Levi-Montalcini Neurobiology Lecture  
The Immunology Lecture  
The Dale McFarlin Lecture

## ■ SYMPOSIA

Microbiome and neuroimmunology  
Immunology of MS  
Stress, depression, and neuroimmunology  
Regulatory gene and environmental factors in MS (1)  
Neuroimmunology for neurodegenerative disorders and Alzheimer's disease  
Memory of disease and neuroimmunological interactions  
Regulatory gene and environmental factors in MS (2)  
Potential new therapy in neuroimmunology  
Glia: new perspectives  
Neuro-immune crosstalk  
Seeking for new treatments  
Immunological mechanisms in nervous system disorders  
Autoantibodies  
Translational neuroimmunology  
Brain-Immune communication

## ■ MORNING LECTURES

Long COVID and ME/CFS  
New perspective  
Computer neuroscience  
Pain and glial cells

## ■ OTHER ACTIVITIES

GSNI Pre-Congress Course  
Plenary Lectures  
Industry Forum  
Peka Kucha  
Young Neuroimmunologists Forum + Mid Career Award  
White Paper Presentation  
Meet the Professors  
JMSS Young Neurologist Forum  
Tech Symposia  
Workshops – oral presentations  
Poster Presentations



# ■ ISNI 2025 Chiba - Japan | Keynote Lecturers

## ■ INVITED LECTURE SPEAKERS

The Dale McFarlin Lecture

**Anne Cross**, Department of Neurology, Washington University School of Medicine - St Louis (MO), USA

The Immunology Lecture

**Jen Gommerman**, Department of Immunology Temerty, Faculty of Medicine, University of Toronto

Canada Research Chair ( Tissue Specific Immunity) - Toronto (ON), Canada

The Rita Levi-Montalcini Neurobiology Lecture

**V. Wee Yong**, Hotchkiss Brain Institute, Departments of Clinical Neurosciences and Oncology at the University of Calgary - Calgary (AB), Canada

Newsom Davis Lecture

**Frauke Zipp**, Department of Neurology Focus Program Translational Neuroscience and Immunotherapy Rhine Main Neuroscience Network University Medical Center of the Johannes Gutenberg University Mainz Mainz Germany

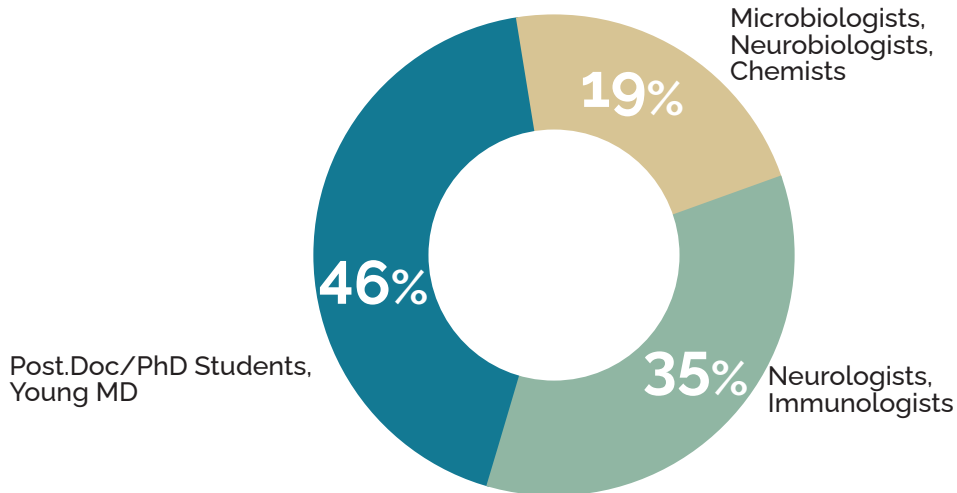




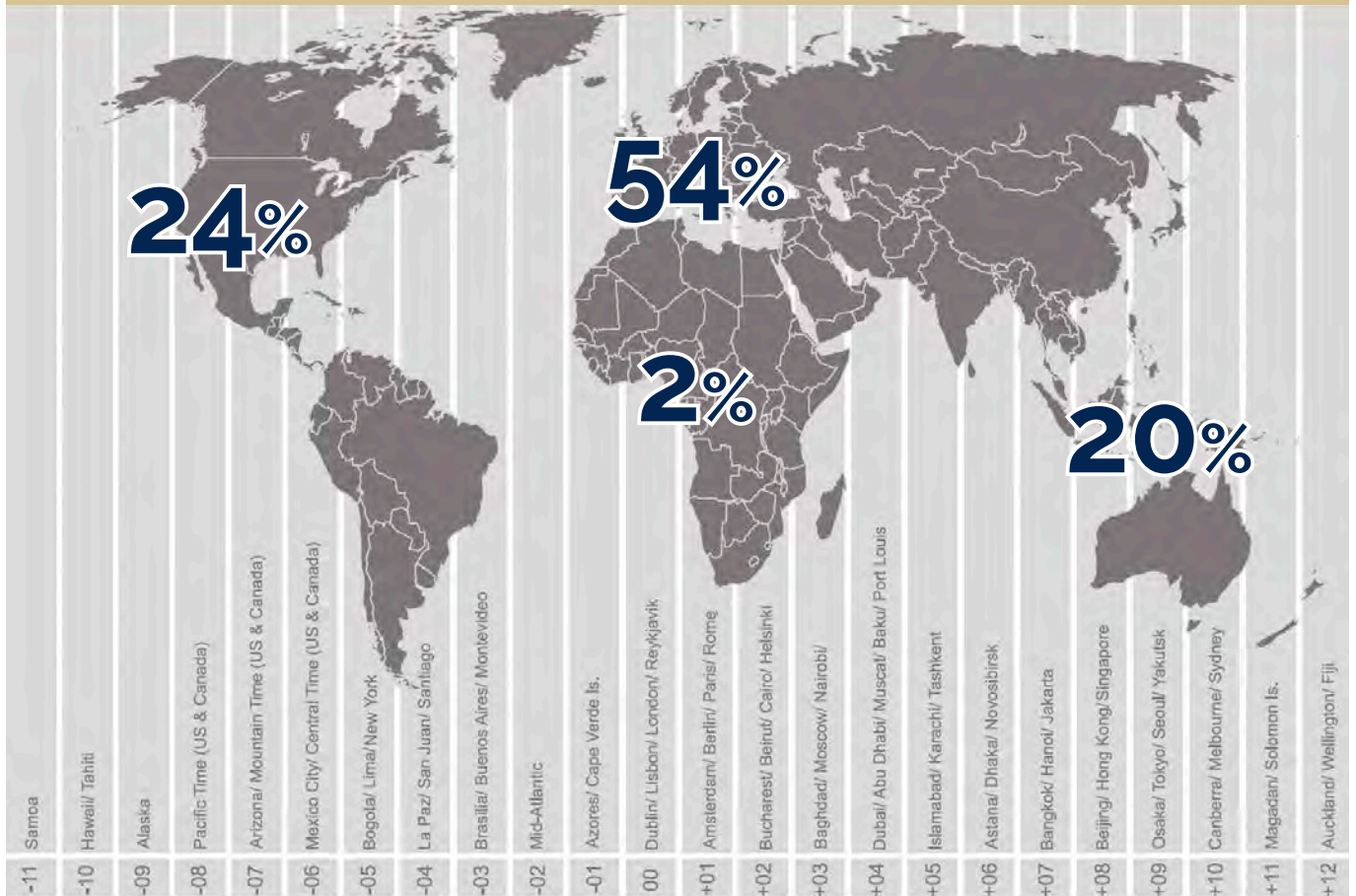
# Why Sponsor?

ISNI and its regional schools represent the largest and most representative community of neuroimmunologists worldwide. All the main representative clinicians and researchers and the next generation of scientists and doctors will be there.

## ATTENDEES BY CATEGORIES



## ORIGIN OF ATTENDEES



# ■ Past ISNI Congresses



**ISNI** International Society  
of Neuroimmunology

WE ARE NEUROIMMUNOLOGY

## PAST CONGRESSES

**11416** attendees have attended the congresses until 2023



**ISNI** International Society  
of Neuroimmunology

WE ARE NEUROIMMUNOLOGY



**ISNI** International Society  
of Neuroimmunology

WE ARE NEUROIMMUNOLOGY

**ISNI Congress 2025**

# SPONSORSHIP LEVELS AND BENEFITS

# Sponsorship benefits description

For further information, bookings, tailored packages, please do not hesitate to contact

[ISNIsponsors@eemservices.com](mailto:ISNIsponsors@eemservices.com)

SUPPORT LEVELS	FROM
PLATINUM	JPY 25,000,000 or above
GOLD	JPY 15,000,000 - 25,000,000
SILVER	JPY 10,000,000 - 15,000,000
BRONZE	JPY 5,000,000 - 10,000,000
GENERAL	JPY 5,000,000 or less

BENEFITS	PLATINUM	GOLD	SILVER	BRONZE	GENERAL
Free full congress registrations	5	3	2	1	
Exhibition badges	5	3	2		
Final list of participants	✓	✓	✓		
Level Package benefits	✓	✓	✓		
Acknowledgements in all congress publications	✓	✓	✓	✓	✓

What is included in the levels packages (see page 14 for more details):

#### Platinum:

- Booth: 27 sqm
- Industry Forum (see page 14 for more)
- Link to a Company landing page from the app
- Naming the plenary hall
- Lounge (202 or 203) for the entire event
- Up to 4 lunch seminars
- Premium ad placements in the abstract book (inside front or back cover, and one full-color internal page)
- Logo placement on lanyards (maximum 2 sponsors)
- VIP Reception Room throughout the event

#### Gold:

- Booth: 18 sqm
- Industry Forum (see page 14 for more)
- Link to a Company landing page from the app
- Naming the International Conference Hall
- Lounge on the 2nd floor for one day
- Acknowledgment for three coffee breaks
- Up to 3 lunch seminars
- One full-color internal page in the abstract book

#### Silver:

- Booth: 9 sqm
- Industry Forum (see page 14 for more)
- Link to a Company landing page from the app
- Naming breakout 201
- Lounge on the 2nd floor for half a day
- Acknowledgment for one coffee break
- Up to 3 lunch seminars
- Half full-color internal page in the abstract book



# ISNI 2025 | Congress items

Please contact EEM for availability and inquiries

PROMOTIONAL OPPORTUNITIES	PRICES
Industry Forum (30 mins)	JPY 4,000,000
Lunch Time Seminar	JPY 3,500,000
Half page ad in abstract book and /or printed program	From JPY 4,000,000
Full page ad in abstract book and /or printed program	JPY 6,000,000
Logo exposure during Coffee/Lunch Break (each)	JPY 2,000,000
Final Program Advertisement – Inside Page / Inside Back Page	JPY 3,500 / 5,000
Push Notification Through Mobile App of ISNI 2025	JPY 2,500,000
Web banner ad on congress website	JPY 2,000,000
One page insert in congress bag	JPY 2,000,000

## EXHIBITION

Space Only (3X3 sqm)	JPY 4,000,000
Shell Scheme	Ask

**Check our exhibition availabilities and view the floor plan**

## EDUCATIONAL OPPORTUNITIES

Educational Grant towards ISNI 2025	Any amount

## ■ ISNI 2025 | Items Details

### INDUSTRY FORUM

To enhance the exchange of scientific knowledge and bridge communication gaps, ISNI has launched the Industry Forum initiative. This platform invites pharmaceutical companies to present their research pipelines, rather than specific products, through their internal medical directors or equivalent scientific representatives.

There will be 9 slots of 30 minutes for each Company in total including Q&A. The sessions are conducted in English.

### PARALLEL SPONSORED SYMPOSIA LUNCH TIME SESSIONS

Opportunity to organize an official parallel non-CME industry symposium, up to 60 minutes (Program subject to approval by the ISNI2025 Committee).

In person, includes hall rental, standard audio/visual equipment and display table. Possibility to record your onsite presentation and place it on the ISNIonline platform. Livestreaming can be purchased. Permission to use the phrase "Official ISNI2025 Symposium".

The supporting company, in addition to the support fee, must cover all speakers' expenses including registration, accommodation and travel. This also applies in case the Sponsored Symposium speakers have already been invited by the event organizers.

### APP OF ISNI 2025

The official App will include the abstract book and scientific program. The support includes: rotating banner in the Home menu, a page dedicated to your Company profile including the possibility documents, video, webpage, etc. . Possibility to setup a meeting agenda, reports and stats on visibility and contacts.

### CONGRESS LANYARDS AND BAGS

Supporter will have the opportunity to brand bags and lanyards the Company logo of the supporter. Max of two logos (only for Platinum sponsors)

### COMPANY CONTENT PAGE

Gather all your content for the ISNI participants in one place! ISNI will offer an online platform where all companies can have their own promotional site to present products, symposium, booth information or any other company related content. Each sponsor will receive an individual URL that will be linked from their logo on the ISNIonline platform/site.

### VIP EXECUTIVE LOUNGES

Located at floor 1, including elegant table & sofa set for 8 people. Special catering can be provided (additional charges)

### HOSPITALITY SUITES – MEETING ROOMS

An opportunity to hire a room at the Congress venue that may be used as a hospitality suite or meeting room. Supporter will be able to host and entertain its guests throughout the Congress. Supporters will have the option to order catering and AV equipment at an additional cost.

### COFFEE/LUNCH BREAKS

Coffee/lunch will be served during breaks. Opportunity to have a one day display of company's logo at the catering point. Opportunity to provide items bearing company logo for use during the supported break.

### APP PUSH NOTIFICATION

Push notification sent to all participants onsite through the ISNI2025 app. Specifications will be provided by the congress organizers.

## HOW TO PROCEED WITH MY SPONSORSHIP REQUEST

To agree upon and confirm your sponsorship level, please contact EEM Association Management, the official treasurer of ISNI at [isnisponsors@eemservices.com](mailto:isnisponsors@eemservices.com)

For arrangements regarding customizations, stand setup, and any other onsite requirements, please reach out to our representative in Japan:

**Inter Group Corporation at the dedicated email: [isni2025chiba@ig-online.jp](mailto:isni2025chiba@ig-online.jp)**



# ■ ISNI 2025 | Payment & Cancellation Policy

## CANCELLATION /MODIFICATION POLICY:

Cancellation/modification of Support items must be made in writing to: EEM Business Events  
Email: ISNIsponsors@eemservices.com c.c to

### The Organizers shall retain:

- **10%** of the Sponsorship Amount if the cancellation/reduction is made before 15/04/2025 inclusive
- **50%** of the Sponsorship Amount if the cancellation/ reduction is made between 16/04/2025 and 15/08/2025 inclusive.
- **100%** of the Sponsorship Amount if the cancellation/ reduction is made after - 15/08/2025

## TERMS OF PAYMENT:

- **60%** upon receipt of the Sponsorship agreement and first invoice
- **40%** by 15/08/2025 (100% afterwards)

All payments must be received before the start date of the Conference. Should the Supporter fail to complete payments prior to the commencement of the Conference the Organizer will be entitled to cancel the reservation while cancellation will be subject to cancellation fees as determined below.

## PAYMENT METHODS

(Details will be indicated in the invoice)

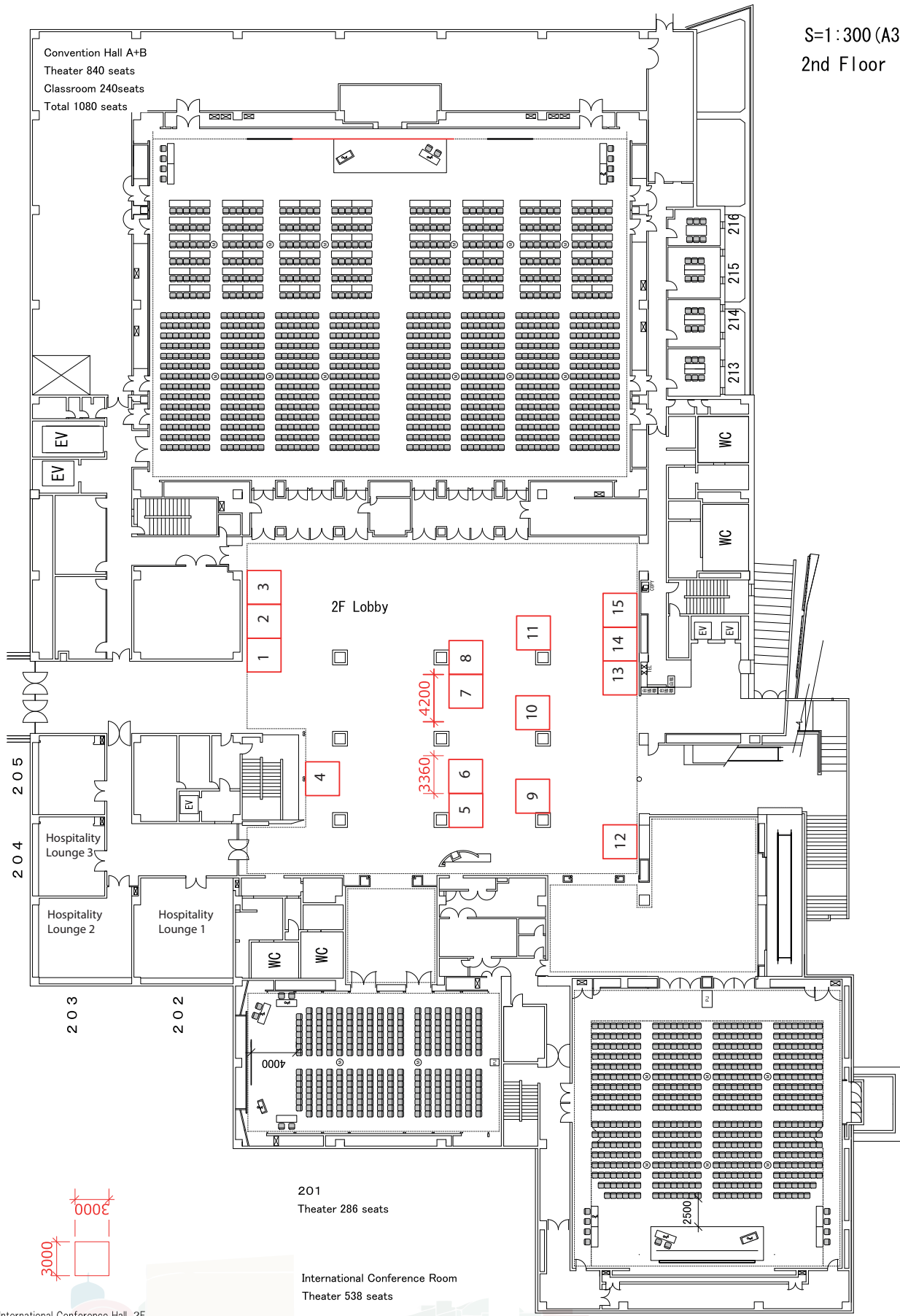
**Option 1:** Payment by Bank Transfer

**Option 2:** Payment by Credit Card (4% surcharge applies)

All Supporters will be acknowledged in the ISNI2025 website ([www.isniweb.org/congress](http://www.isniweb.org/congress)), in the ISNI2025 app and Sponsors' section of the program book. Platinum Sponsors' logo will also be featured on the opening slide in all meeting halls before the session starts, coffee and lunch breaks

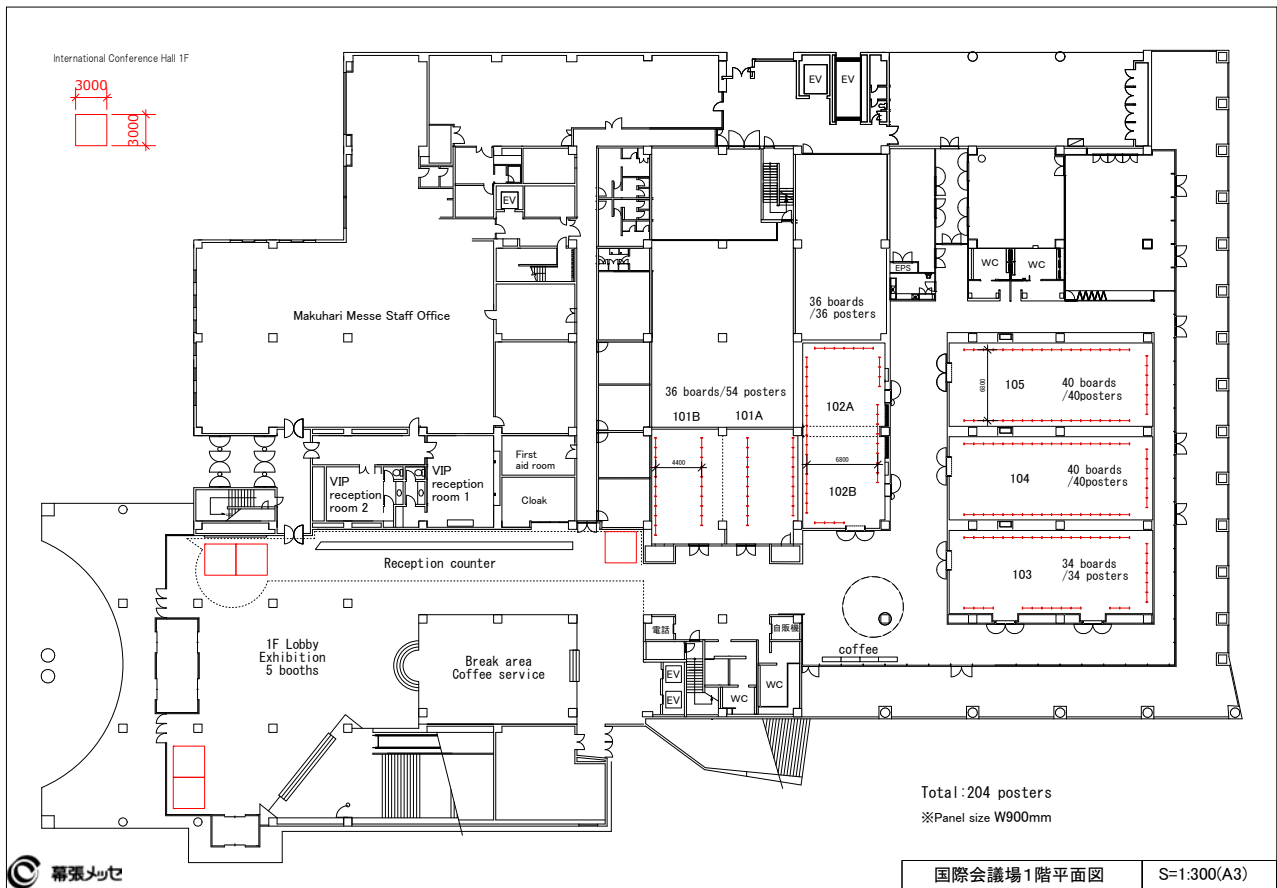


S=1 : 300 (A3)  
2nd Floor

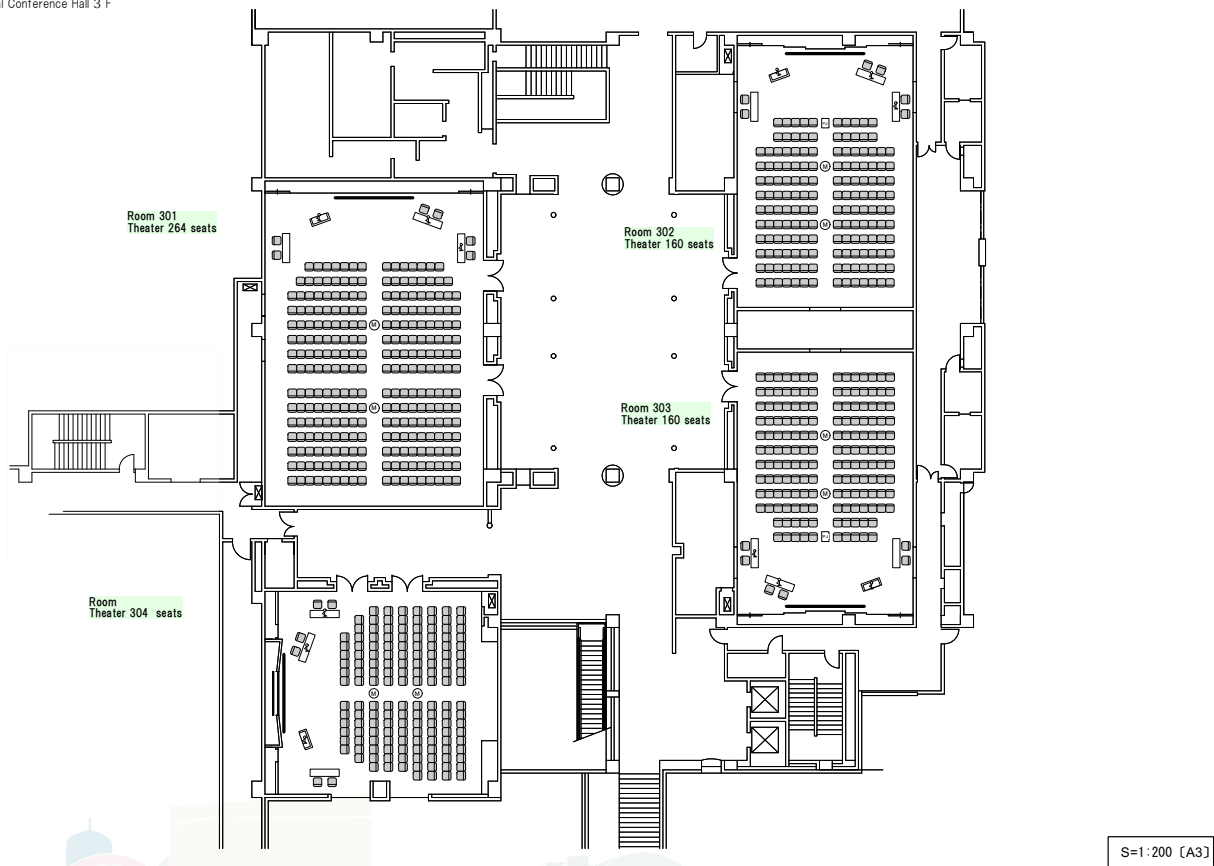


International Conference Hall 2F





International Conference Hall 3 F





**ISNI** International Society  
of Neuroimmunology

WE ARE NEUROIMMUNOLOGY

## Info & Contacts



[www.eemservices.com](http://www.eemservices.com)

Proudly the official ISNI congress organizer since 2004

**Book your item or contact us for information:**

[isnisponsors@eemservices.com](mailto:isnisponsors@eemservices.com)